



samfix

Steps to prepare the wood;

- Drill a screw hole of 34 mm or 24 mm depth until half of the walls thickness using an 8 mm diameter.
- Drill a pin hole of 15 mm diameter. The depth must be 4,5 mm lower than the screw hole axis.
- Drill a hole for dowels or screws in the axis previously drilled to the sideways as shown on the table.

Mounting Steps;

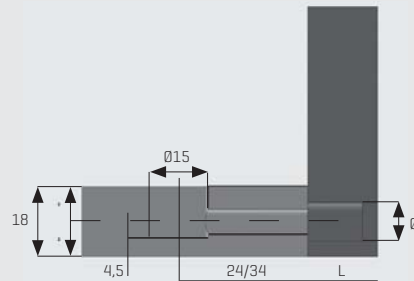
- Prepare the wood according to the given measurements.
- Place the fitting to the pin hole.
- Screw a shaft into the fitting.
- Place the pin with the writings heading to the top and the arrow pointing to the shaft.
- Put the shaft on the pin.
- Turn the pin towards the locking sign.
- Place the Cover Cap on the pin's top to assure an esthetic coverage.

* All dimensions in the graphs above are measured in mm.

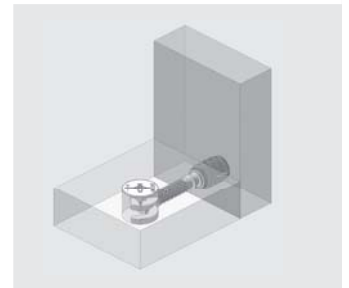
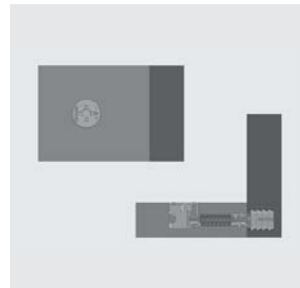
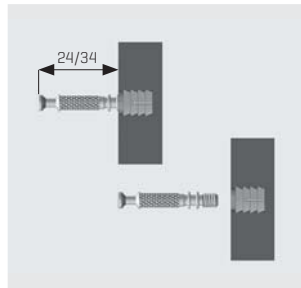
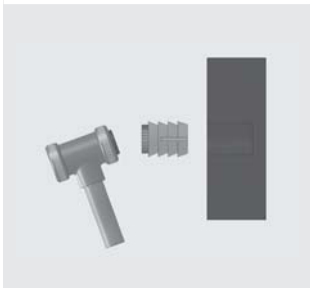
Code Table

| DESCRIPTION | CODE | PACKAGE |
|---|----------|--------------|
| SamFix Cam Dia 015x12 Nickel | 10800111 | 2000 Pcs/Box |
| SamFix Cam Dia 015x12 Zinc | 10800131 | 2000 Pcs/Box |
| SamFix Cam Dia 015x12 Nickel Not Plated | 10800112 | 2000 Pcs/Box |
| SamFix Cam Dia 015x13.2 Nickel | 10800121 | 2000 Pcs/Box |
| SamFix Cam Dia 015x13.2 Zinc | 10800141 | 2000 Pcs/Box |
| SamFix Cam Dia 015x13.2 Nickel Not Plated | 10800122 | 2000 Pcs/Box |
| SamFix Bolt M6 Steel 34 mm Milled | 10800211 | 2000 Pcs/Box |
| SamFix Bolt M6 Steel 34 mm Milled Not Plated | 10800212 | 2000 Pcs/Box |
| SamFix Bolt M6 Steel 24 mm Milled | 1080027 | 2000 Pcs/Box |
| SamFix Bolt M6 Steel 24 mm Milled Not Plated | 10800272 | 2000 Pcs/Box |
| SamFix Bolt Euro Screwed 6,3 Steel 34 Milled | 10800231 | 2000 Pcs/Box |
| SamFix Bolt Euro Screwed 6,3 Steel 34 Milled Not Plated | 10800232 | 2000 Pcs/Box |
| SamFix Bolt Euro Screwed 6,3 Steel 24 Milled | 1080026 | 2000 Pcs/Box |
| SamFix Bolt Euro Screwed 6,3 Steel 24 Milled Not Plated | 10800262 | 2000 Pcs/Box |
| SamFix Channeled Dia M6x8x10 Pls. Chain Dowel | 1080031 | 2000 Pcs/Box |
| SamFix Channeled Dia M6x8x12 Pls. Chain Dowel | 1080032 | 2000 Pcs/Box |
| SamFix Channeled Dia M6x10x10 Pls. Chain Dowel | 1080033 | 2000 Pcs/Box |
| SamFix Channeled Dia M6x10x12 Chain Dowel | 1080034 | 2000 Pcs/Box |
| Single Plastic Dowel M6x10x12 Pls. Single Dowel | 1080038 | 2000 Pcs/Box |
| SamFix Zamac Dowel M6x8x13 | 108401 | 2000 Pcs/Box |
| SamFix Zamac Dowel M6x8x13 Not Plated | 1084012 | 2000 Pcs/Box |
| SamFix Cover White | 108344 | 2000 Pcs/Box |
| SamFix Cover Almond | 108345 | 2000 Pcs/Box |
| SamFix Cover Black | 108347 | 2000 Pcs/Box |
| SamFix Cover Cherry | 108341 | 2000 Pcs/Box |
| SamFix Cover Pear | 10834A | 2000 Pcs/Box |
| SamFix Cover Oak | 108352 | 2000 Pcs/Box |
| SamFix Cover Mahangany | 108373 | 2000 Pcs/Box |
| SamFix Cover Brown | 108343 | 2000 Pcs/Box |

Dimensions ve Mounting

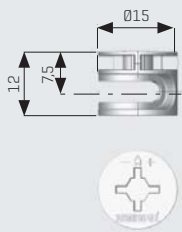


| | Ø mm | L mm |
|--------------|------|------|
| Ø8x10 Dowel | Ø8 | 11 |
| Ø8x12 Dowel | Ø8 | 13 |
| Ø10x10 Dowel | Ø10 | 11 |
| Ø10x12 Dowel | Ø10 | 13 |
| Euro Screw | Ø5 | 12 |
| Zamac Dowel | Ø8 | 13 |

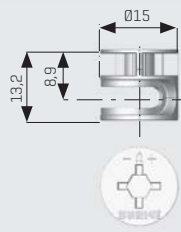


Cam Types

Cam 12 mm



Cam 13.2 mm

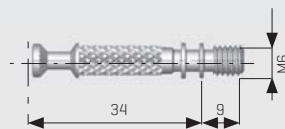


Bolt Types

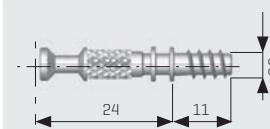
24 mm Steel Bolt M6 Screw Type



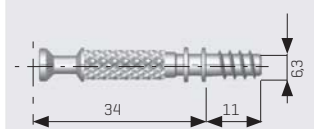
34 mm Steel Bolt M6 Screw Type



24 mm Steel Bolt Euro Screw Type



34 mm Steel Bolt Euro Screw Type



Dowel Types

Ø10x12 - Cracked M6 Plastic Dowel



Ø10x10 - Cracked M6 Plastic Dowel



Ø8x12 - Cracked M6 Plastic Dowel



Ø8x10 - Cracked M6 Plastic Dowel

