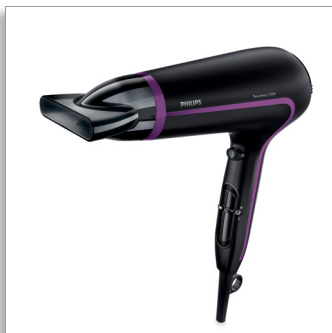




Philips ThermoProtect  
Hairdryer

**2100W**

ThermoProtect setting  
styling nozzle/concentrator  
6 speed/ temperature settings



**HP8230/50**

Fast dry at a lower temperature with ThermoProtect  
with 14mm styling nozzle.

Protect your hair while still enjoying fast drying results. Choose from multiple speed and temperature settings to get the blow dry you want or select ThermoProtect for fast drying at a constant caring temperature.

**Beautifully styled hair**

- Professional 2100W for perfect salon results
- Cool Shot sets your style
- Perfect styling results with a slim styling nozzle
- Six flexible speed and temperature settings for full control

**Less Hair Damage**

- ThermoProtect temperature setting

**Easy to use**

- Easy storage hook for convenient storage
- 1.8 m power cord
- Removeable air flow filter makes cleaning quick and easy

**PHILIPS**

# Highlights

## Cool Shot



A must-have professional function for hair stylists. The Cool Shot button provides an intense burst of cold air. It is used after styling to finish and set the style.

## Professional 2100W



This 2100W professional hairdryer creates a powerful airflow. The resulting combination of power and speed makes drying and styling your hair quicker and easier.

## Easy storage hook



The rubberised hook is located at the base of the handle and provides another storage option, particularly convenient for use in the home or when staying at a hotel.

## Slim styling nozzle



Perfect styling results and a shiny, polished look with a slim styling nozzle for precise styling.

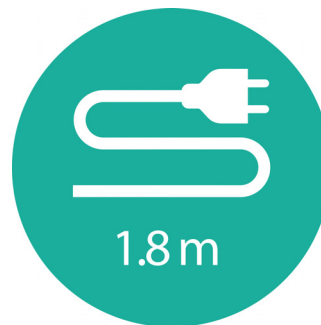
## ThermoProtect temperature



The ThermoProtect temperature provides the optimal drying temperature and gives

additional protection from overheating the hair. With the same powerful airflow, you will get the best results in a caring way.

## 1.8 m cord



Convenient to use thanks to the 1.8m power cord length.

## Removeable air inlet filter

The removeable air flow filter of your hairdryer is easy to maintain. Simply click off to clean. Doing this regularly will prevent build up of dust and hair that can affect drying performance.

## Speed and temperature settings



The speed and heat required can be easily adjusted to create the perfect style. Six different settings ensure full control for precise and tailored styling.

# Specifications

## Technical specifications

- Voltage: 220-240 V
- Frequency: 50-60 Hz
- Wattage: 2100 W
- Power: 2100 W
- Color/finishing: High Gloss & Mat Black
- Housing material: ABS
- Motor: DC Motor
- Cord length: 1.8 m

## Features

- Foldable handle: No
- Cool shot
- Dual voltage: No
- Travel pouch: No
- Ceramic coating: No
- Ion conditioning: No
- Hanging loop

- Diffuser: No
- Nozzle / Concentrator: Slim styling 14mm nozzle
- Number of attachments: 1

## Service

- 2-year guarantee

## Weight & dimensions

- A-Box Dimensions: Length = 63cm, Width = 35cm, Height = 25cm
- A-Box Weight: 5.7kg
- F-Box Dimensions: Depth = 11cm, Height = 23cm, Width = 31cm
- F-Box weight: 0.8kg
- Product size: Width = 22cm, Height = 31cm, Length = 10cm
- Product weight (excl. pack): 0.6kg



Issue date 2016-09-08

Version: 1.0.1

© 2016 Koninklijke Philips N.V.  
All Rights reserved.

Specifications are subject to change without notice.  
Trademarks are the property of Koninklijke Philips N.V.  
or their respective owners.

[www.philips.com](http://www.philips.com)